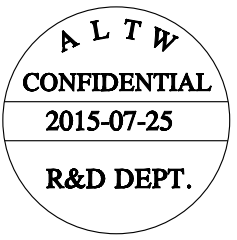
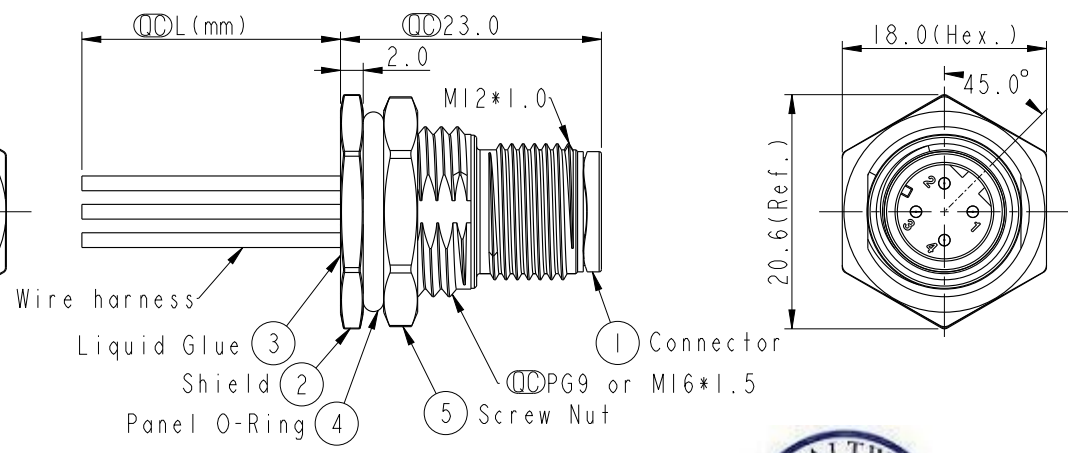
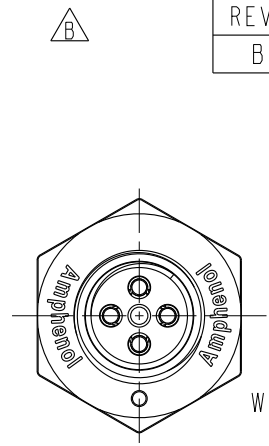
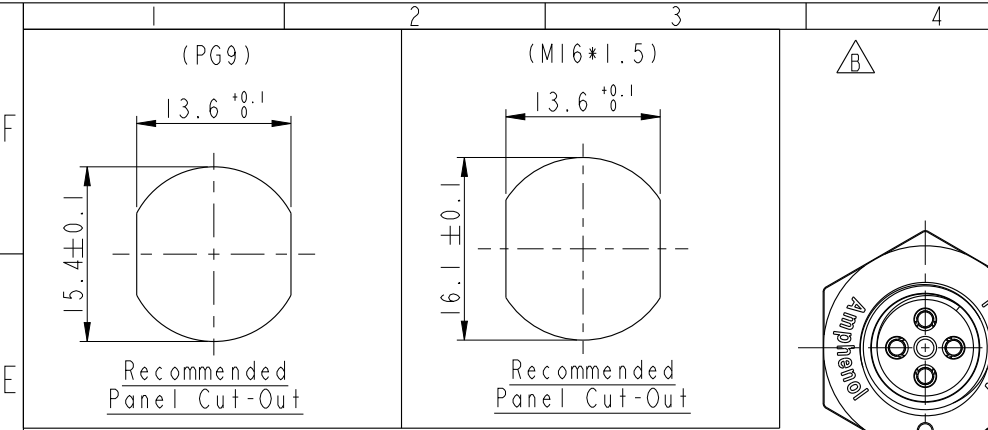
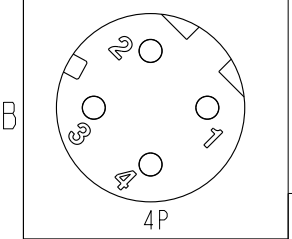


THIS DOCUMENT IS SUBJECT TO CHANGE WITHOUT NOTICE. IT IS CONFIDENTIAL AND A PROPERTY OF Amphenol LTW. DISCLOSURE TO THIRD PARTY HAS TO BE AUTHORIZED BY Amphenol LTW.

| | | | | |
|------|----------------|------------|-------------|--------------------------|
| REV. | ECN NO. | DATE | SIGN | DESCRIPTION |
| B | LE31580016-017 | 2015-07-25 | Yulong_wang | Change to Share Drawing. |



| | | |
|-------|---------|---|
| 4 | Black | 黑 |
| 3 | Blue | 藍 |
| 2 | White | 白 |
| 1 | Brown | 棕 |
| Pin # | Wire | |
| | Pin Out | |



M 12D - 04 P M M C - S F 8 X XX

12D: D-Code
 04: 4Pin
 P: Panel (板端)
 M: Male Connector (公座)
 M: Male Pin (公Pin)
 C: Crimp Type (打端式)
 S: Screw (螺紋式)

15: 150mm
 30: 300mm
 50: 500mm
 A0: 1000mm
 A5: 1500mm
 Wire Length (L): 150~1500mm

B: PG9
 C: M16*1.5

8: IP68 (防水等級68)

F: Front Fasten (前鎖式/Enclosure Rear Mount)

- Note:
- * \varnothing Important Dimension.
 - * Waterproof Rate: IP68.
 - * Housing: Nylon+GF, Black.
 - * Male Pin: Copper Alloy, Gold Plated.
 - * Shield: Zinc Alloy, Nickel Plated.
 - * Screw Nut: Zinc Alloy, Nickel Plated.
 - * Panel O-Ring: Viton, Black.
 - * Wire harness: UL1061
 - * Rated Voltage: 250V dc. or ac.
 - * Rated Current: 4A
 - * Operating Temperature: -25~85°C
 - * For Panel Thickness Max 4.5mm.
 - * Recommended Nut Torque: 4-6 Kgf.cm.
 - * Wire harness Tolerance: 150~300 ±15mm
 301~1000 ±20mm
 Over1000 ±40mm

| | | | | |
|----------------------------|----------|--------------|-----|--|
| Pin Assignments Front View | 4P | UL1061 | 22 | M12D-04PMMC-SF8BXX M12D-04PMMC-SF8CXX |
| | Contacts | Wire harness | AWG | Item No. |

| | | | | |
|------------|--|---|---------|---------------------------------|
| UNIT: mm | | TITLE M12 D-Code Male Conn. Panel Front With Wire harness | | |
| TOLERANCE | | SCALE | SIZE | SHEET |
| .X ±0.25 | | 2:1 | A4 | 1 OF 1 |
| .XX ±0.1 | | REV. | WC-REV. | |
| .XXX ±0.05 | | B | A.5 | |
| ANGLES ±1° | | | | \varnothing : Inspection item |

Amphenol LTW
 安費諾亮泰企業股份有限公司

| | | |
|--------------------|-------------|------------|
| ITEM NO. | DRAWN BY | DATE |
| | Yulong_wang | 2015-07-25 |
| DWG NO. | CHECKED BY | DATE |
| M12D-04PMMC-SF8XXX | Cary | 2015-07-25 |
| CUSTOMER | APPROVED BY | DATE |
| ALTW | Jerry | 2015-07-25 |