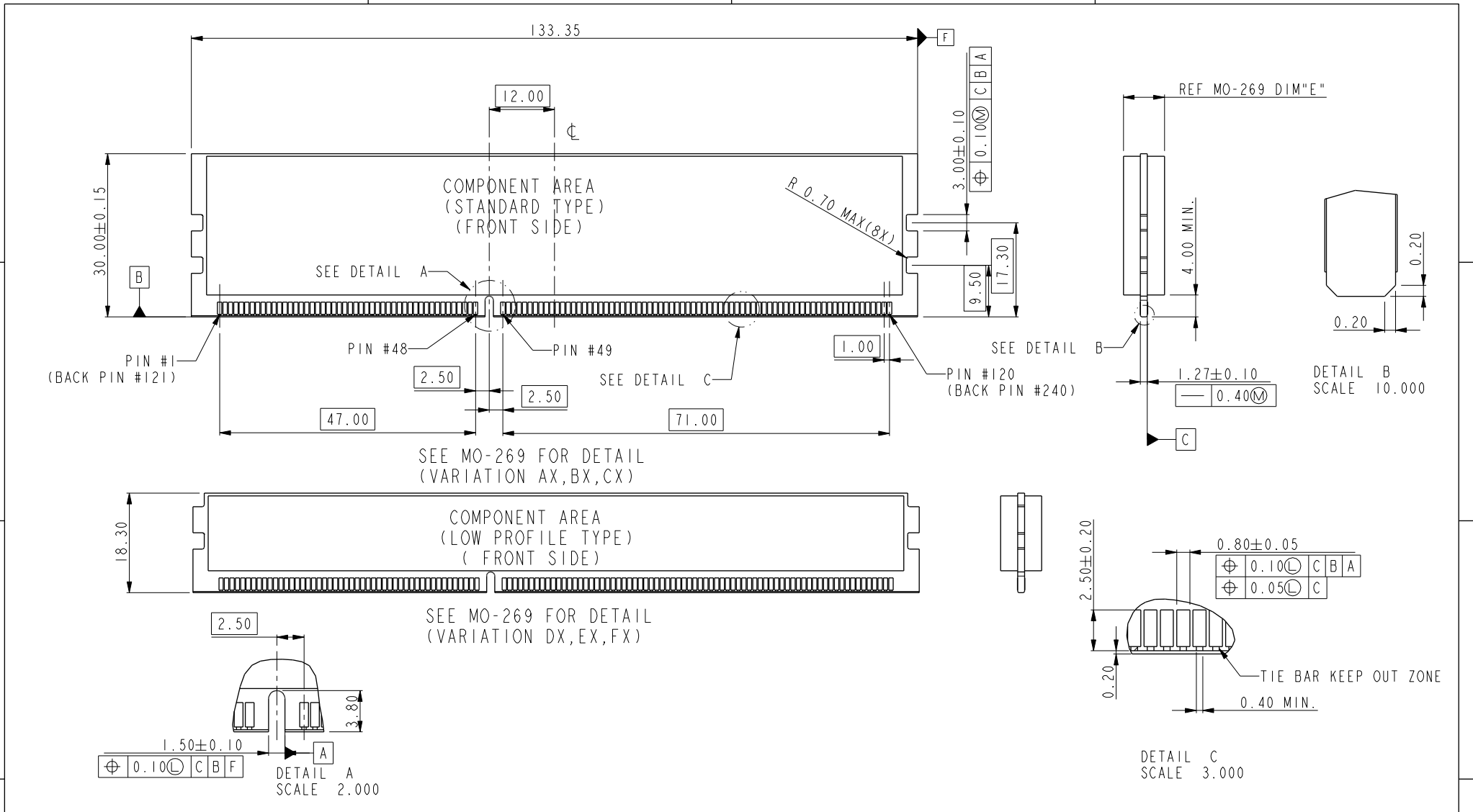






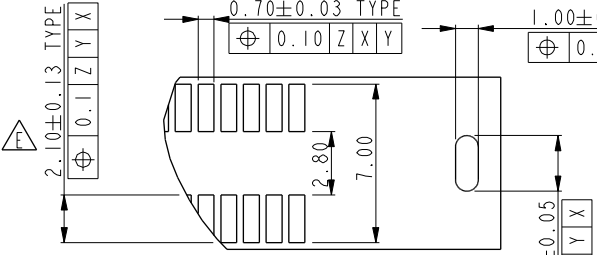
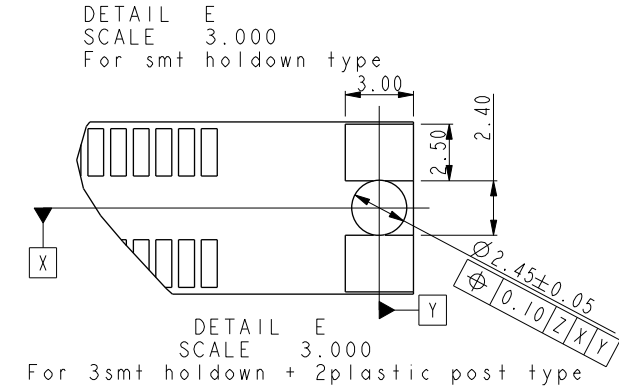
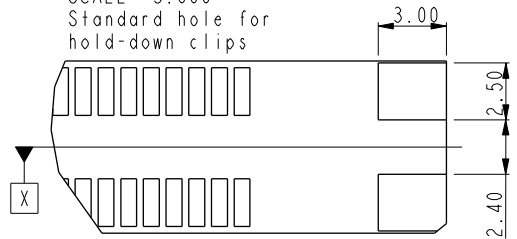
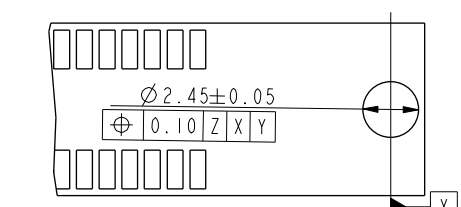
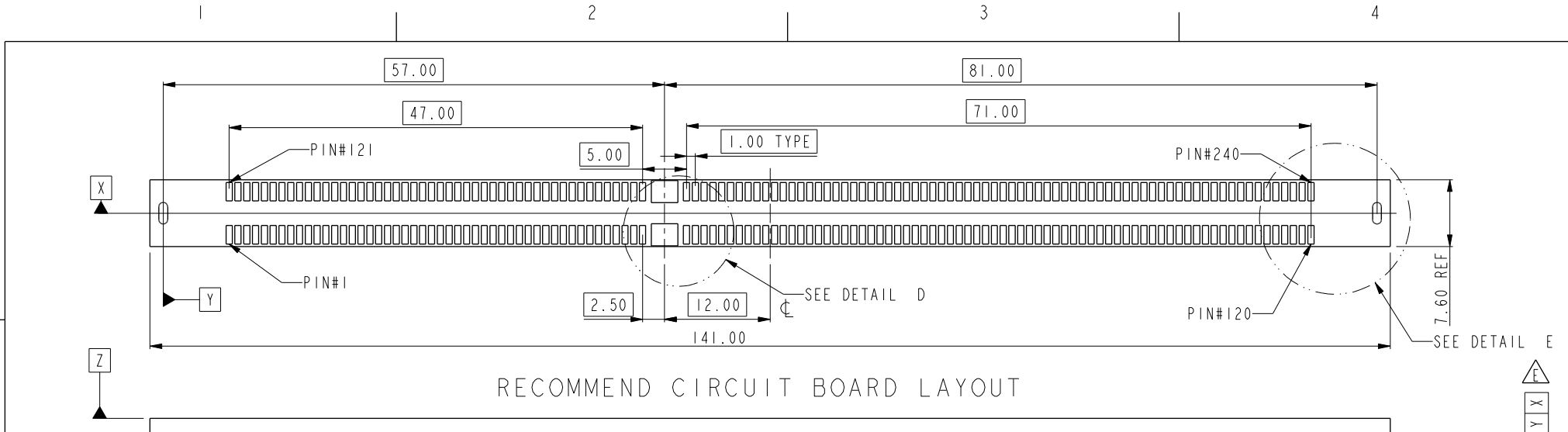
Copyright FCI.



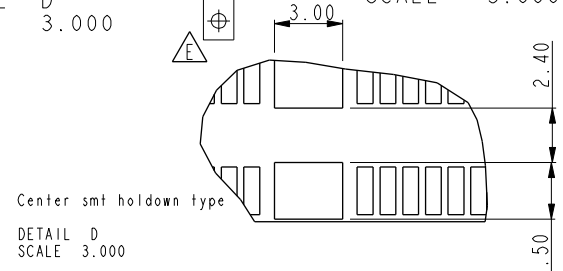
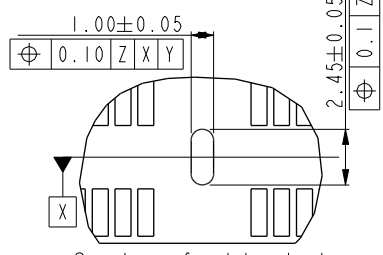
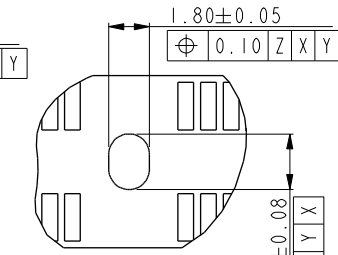
dr	Rick Bian	2010/07/03	projection 	MM ←→	size	A4	scale	1.000
eng	Eric Jiang	2014/07/31			ecn no	ELX-DG-18366-1		
chr	Jian Huang	2014/08/04			rel level	Released		
appr	Pei-Ming Zheng	2014/08/04	product family					
		title		DDR III SMT SOCKET ASS'Y (WITH LCP HOUSING)		dwg no		10104389
www.fci.com		cat. no.		*		Product - Customer Drw		sheet 2 of 4
						rev		E



Copyright FCI.



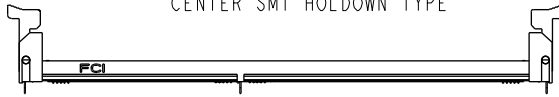
For paste-in-hole applications.  
Can be used to solder clips during reflow operation.



dr	Rick Bian	2010/07/03	projection 	MM ←→	size	A4	scale	1.000
eng	Eric Jiang	2014/07/31			ecn no	ELX-DG-18366-1		
chr	Jian Huang	2014/08/04			rel level	Released		
appr	Pei-Ming Zheng	2014/08/04			product family			
www.fci.com			title	DDR III SMT SOCKET ASS'Y (WITH LCP HOUSING)		dwg no	10104389	
			cat. no.	*	Product - Customer Drw		sheet 3 of 4	
					PDS: Rev :E		STATUS:Released	
							Printed: Aug 05, 2014	



SCALE 0.500  
10104389-10\*\*\*  
CENTER SMT HOLDOWN TYPE



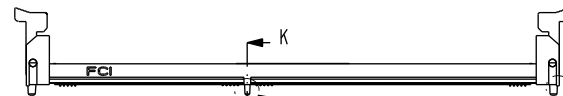
SCALE 0.500  
10104389-11\*\*\*  
3 FORK LOCK TYPE



SCALE 0.500  
10104389-12\*\*\*  
3 SMT HOLDOWN TYPE



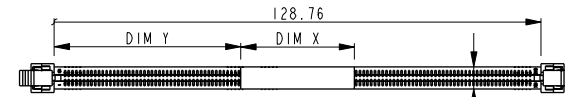
SCALE 0.500  
10104389-13\*\*\*  
3 SMT HOLDOWN AND 2 PLASTIC POST TYPE



SCALE 0.500  
10104389-15\*\*\*  
3 PLASTIC POST TYPE

NOTES:

- MATERIAL:  
HOUSING: HIGH PERFORMANCE RESINS, GLASS FILLED UL94V-0 RATED.  
EJECTOR: HIGH PERFORMANCE RESINS, GLASS FILLED UL94V-0 RATED.  
TERMINAL: HIGH PERFORMANCE COPPER ALLOY  
METAL CLIP: COPPER ALLOY.
- FCI LOGO TO BE APPROXIMATELY LOCATED AS SHOWN ON PRINT.
- PRODUCT SPECIFICATION: GS-12-486.
- PACKAGING SPECIFICATION: GS-14-899.
- RECOMMENDED STENCIL THICKNESS NO LESS THAN 0.15 mm.
- FOR OPTIMUM PERFORMANCE, THE TIE BAR IS TO BE ON AN INTERNAL LAYER SO THAT THE REMNANT CANNOT CAUSE CONTACT DAMAGE.
- THE DATE CODE IS SHOWN "MMDDYY\*.". "\*" MEANS PRODUCTION LINE.
- THIS PRODUCT MEETS EUROPEAN UNION DIRECTIVES AND OTHER COUNTRY REGULATIONS AS DESCRIBED IN GS-22-008.
- THE HOUSING WILL WITH STAND EXPOSURE TO 260°C PEAK TEMPERATURE FOR 10 SECONDS IN AN IR REFLOW SOLDERING APPLICATION.
- PRODUCT APPLICATION SPEC GS-20-089.
- THE HOLDOWN TYPES ARE OPTION FOR HOLDOWN OR FORKLOCK.
- A  $\Delta$  SYMBOL WILL BE NEXT TO ANY DIMENSION, VIEW, OR NOTE WHICH HAS BEEN MODIFIED WITH THE CURRENT DRAWING REVISION.



SCALE 0.500  
WITH MYLAR TAPE (OPTIONAL)

10104389 - □ □ □ □

PLATING

CODE	CONTACT	SOLDERTAIL	UNDERPLATE	NOTE
1LF	10u" (0.25um) MIN. GOLD			CONTACT NON-LUBRICANT
2LF	15u" (0.38um) MIN. GOLD			
3LF	30u" (0.76um) MIN. GOLD			
4LF	GOLD FLASH	100u" (2.54um) MIN. 100% MATT TIN	50u" (1.27um) MIN. NICKEL OVERALL	CONTACT LUBRICATED
5LF	10u" (0.25um) MIN. GOLD			
6LF	15u" (0.38um) MIN. GOLD			
7LF	30u" (0.76um) MIN. GOLD			
8LF	GOLD FLASH			

STYLE : MECHANICAL KEYING

1 : 1.5 VOLT. W/ CENTER KEY

HOLD DOWN TYPE

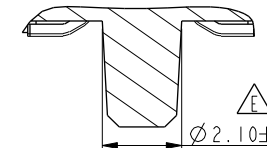
- 0 : CENTER HOLD DOWN, FORKLOCK AT BOTH END
- 1 : 3 FORKLOCK TYPE
- 2 : 3 SMT HOLDOWN TYPE
- 3 : 3 SMT HOLDOWN AND 2 PLASTIC POST
- 5 : 3 PLASTIC POST TYPE

PACKAGE AND MYLAR OPTION

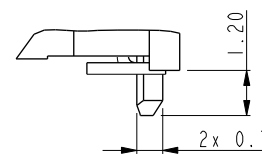
- $\Delta$  0: SOFT TRAY WITHOUT MYLAR (OBSOLETE)
- 1: HARD TRAY WITH MYLAR
- 2: HARD TRAY WITHOUT MYLAR
- $\Delta$  3: SOFT TRAY WITH MYLAR (OBSOLETE)
- 4: SPECIAL HARD TRAY WITH MYLAR
- 5: SPECIAL HARD TRAY WITHOUT MYLAR
- 6: SPECIAL HARD TRAY WITH MYLAR(24PCS/TRAY)

COLOR OF HOUSING AND EJECTOR

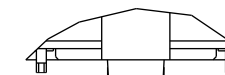
- 0 : BLACK HOUSING + IVORY EJECTOR
- 1 : BLACK HOUSING + BLACK EJECTOR
- 2 : IVORY HOUSING + IVORY EJECTOR
- 9 : IVORY HOUSING + BLACK EJECTOR



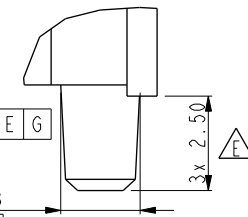
SECTION K-K  
SCALE 5.000



DETAIL N  
SCALE 5.000



DETAIL J  
SCALE 5.000



DETAIL M  
SCALE 5.000

dr	Rick Bian	2010/07/03	projection	MM	size	A4	scale	1.000
eng	Eric Jiang	2014/07/31			ecn no	ELX-DG-18366-1		
chr	Jian Huang	2014/08/04				rel level	Released	
appr	Pei-Ming Zheng	2014/08/04	product family		rev		10104389	
		title			dwg no		E	
www.fci.com		cat. no.		Product - Customer Drw		sheet 4 of 4		



Copyright FCI.