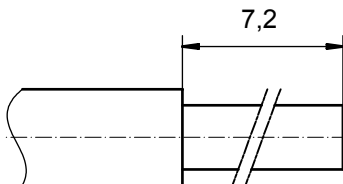


STRIPPING DIMENSIONS



Directive 2002/95/EC
„RoHS“
Compliant

NOTES:

CRIMPING:
 USE CRIMP TOOL: 360X10409X
 WITH TOOL INSERT: 36-000060
 SELECTOR SETTINGS: 5 FOR AWG 8
 4 FOR AWG 10

3	1	REAR SIDE	COPPER ALLOY	min. 8µin HARD GOLD over min. 50µin NICKEL
2	1	RETAINING RING	COPPER ALLOY	NICKEL PLATED
1	1	MATING SIDE	COPPER ALLOY	min. 30µin HARD GOLD over min. 50µin NICKEL
item	quantity	part description	material	plating

APPROVAL # FREIGABE # DEBLOCAGE # AUTORIZACION # APPROVAL	
CUSTOMER APPROVAL DATE:	
NAME:	TITLE:
COMPANY NAME:	
APPROVAL # FREIGABE # DEBLOCAGE # AUTORIZACION # APPROVAL	

THIS DRAWING MAY NOT BE COPIED OR REPRODUCED IN ANY WAY, AND MAY NOT BE PASSED ON TO A THIRD PARTY WITHOUT WRITTEN PERMISSION. OWNERSHIP AND COPYRIGHT OF CONEC GmbH DO NOT ALTER CAD DRAWING BY HAND		tolerance		dim. in mm	scale:	
		ISO 2768-m			8:1	
		date	name		material:	
		drawn	04.01.08 Schmidt		see partlist	
		appd.	04.01.08 Koch		title:	
		norm			HIGH POWER CONTACT FEMALE CRIMP VERSION 40A D-SUB COMBINATION	
		d-old				
		a	Origin		dwg no:	Inventor 10
		rev.	description date name		13K1A2378	
						DIN-A3
				part no:		sh: 1
				13-000321		