

PART NUMBER	"A" ±.03 [0.8]	"B" ±.03 [0.8]	"C" REF.	"D" ±.03 [0.8]	"E" REF.	"F" ±.03 [0.8]	"G" REF.	"H" REF.	"Z"	FIG. NO.
RCOFM-25	.94 [24]	---	.41 [10.5]	.09 [2.2]	---	---	.055 [1.4]	.055 [1.4]	2	1
RCOFM-40	1.15 [29.1]	1.26 [32.0]	.56 [14.2]	.19 [4.8]	.16 [4.0]	.16 [4.0]	.06 [1.6]	.06 [1.6]	2	2
RCOFM-50	1.65 [42.0]	1.62 [41.1]		.19 [4.8]	.15 [3.7]	.18 [4.6]			3	
RCOFM-60	2.09 [53.2]	1.97 [50.0]		.17 [4.4]	.12 [3.0]	.18 [4.6]			4	
RCOFM-80	3.00 [76.2]	2.81 [71.5]		.19 [4.9]	.14 [3.5]	.20 [5.2]	.07 [1.8]	5		
RCOFM-92	3.54 [90.0]	3.25 [82.5]		.19 [4.9]	.17 [4.2]	.18 [4.6]	.06 [1.6]	.07 [1.8]	6	
RCOFM-120	4.55 [115.6]	4.16 [104.8]		.35 [9.0]	.22 [5.5]		.10 [2.6]	.07 [1.8]	8	

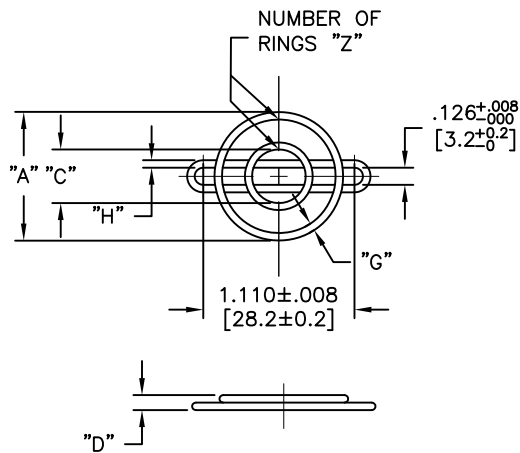


FIG. 1.

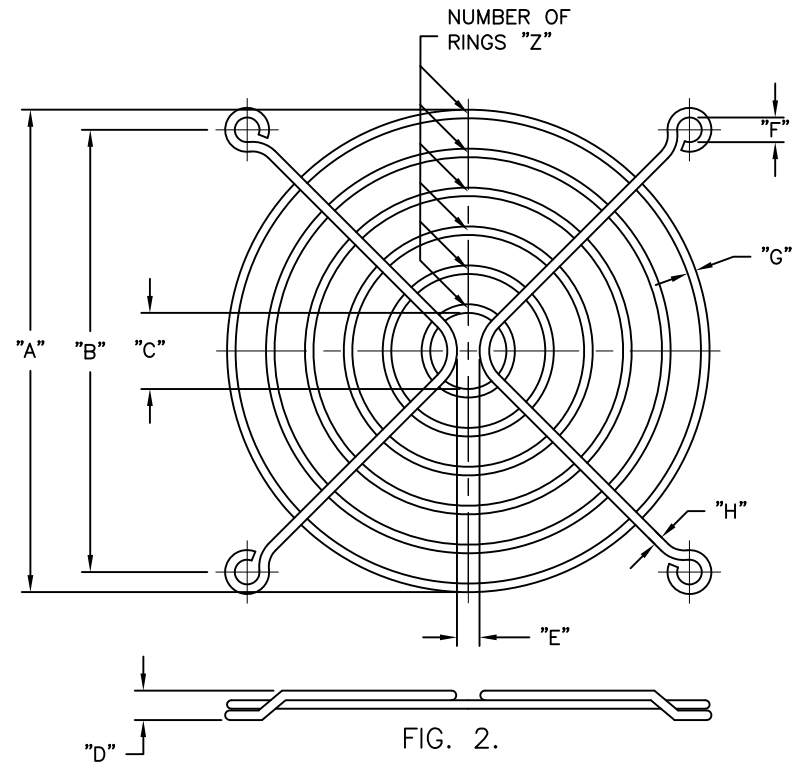


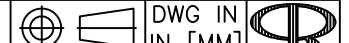
FIG. 2.

NOTES

1. MATERIAL: STEEL WIRE ELECTROPLATED (RMS-261).
2. PLATING: NICKEL CHROME (RMS-229)

E			D			C			B			A			REV		
SEE CO 200247 FOR CHANGES			SK 09.23.08			TOLERANCES UNLESS NOTED			FILE # RCOFM			DWN: R.D.G.			DT: 11/11/04		
SEE ECN # 1266 FOR CHANGES			SK 12.14.06			.XX=±.010			MAT'L: SEE NOTES			CHKD: SK			ENGR: RDG		
SEE ECN # 1159 FOR CHANGES			SJ 05.02.06			.XXX=±.005			RE: RICHCO, INC.			RICHCO INC.			PART #		
SEE ECN # 1054 FOR CHANGES			SK 09.09.05			FRAC=±1/64			PO BOX 804238, CHICAGO, 60680			PO BOX 804238, CHICAGO, 60680			SEE TABLE		
RELEASED FOR PRODUCTION			SK 03.17.05			ANG=±1°			(773) 539-4060			(773) 539-4060			PRINT TYPE		
DESCRIPTION			ENGR DATE												CA		

TITLE: METAL FAN GUARD



DWG IN IN [MM] FINAL